

Supporting businesses and workers



338k

businesses covered

3.9m

workers covered

90k

sick & injured workers supported



39k

workers returned to work in 4 weeks

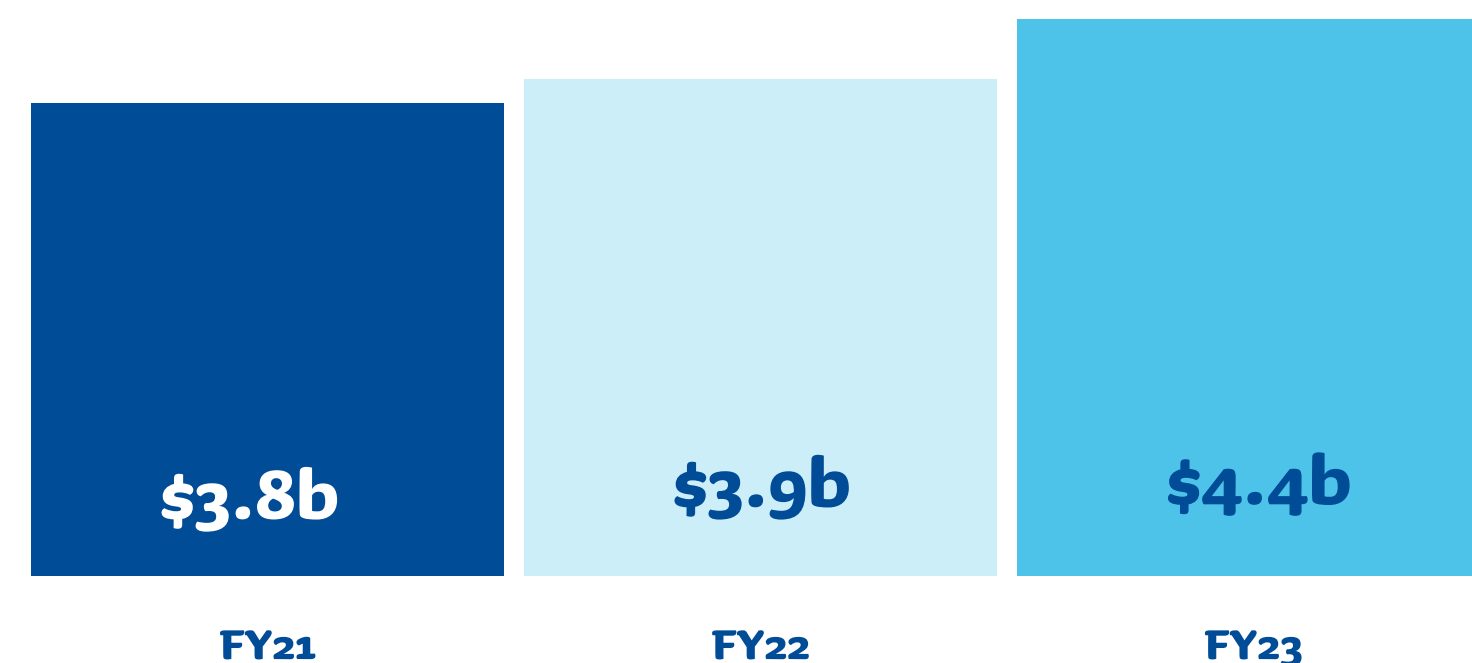
49k

workers returned to work in 13 weeks

53k

workers returned to work in 26 weeks

Workers compensation claims payments



Caring for people long term



1346

people supported with brain injuries

338

people supported with spinal injuries

5,339

workers suffering from dust diseases supported

1

new scheme launched to support CTP lifetime care needs

Lung screens completed



Committed to continuous improvement



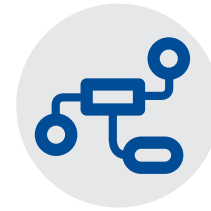
6

Claims Service Providers introduced as part of new claims service model



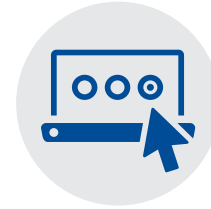
4

focused on psychological claims services



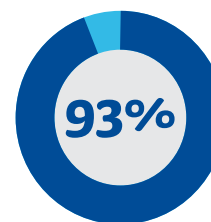
1

new Professional Standards Framework introduced



1

new Mental Health Claims hub launched



Enterprise Improvement program activities implemented

Providing education and training



22

Workers Compensation info events hosted to support businesses

14

face-to-face events in regional areas



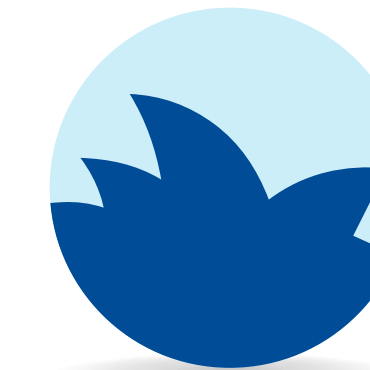
8,400

people registered for these events

41

training sessions delivered to support employers with injury prevention

Protecting important assets



\$299b

NSW Government assets protected

\$23b

of construction value insured incl Western Harbour Tunnel and Coffs Harbour Bypass



887

homeowners supported to finish their home



Find out more about these and other icare initiatives in our icare 2022-23 Annual Report